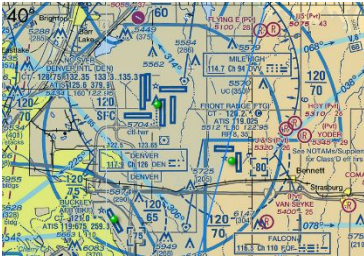


## Assignment

Airspace constitutes a significant portion of the knowledge exam. For this assignment use the [Skyvector](#) website to find an airport of your choosing. Once you have found an airport please provide the following:

- 1) A screenshot of the airport.
- 2) The airspace classification and how it can be identified (please include all airspace classifications present).
- 3) The height of the airspace top and bottom in feet (do not choose number closest to the airport, the bottom is always surface).
- 4) If it has a control tower or not and how that is determined.
- 5) Are there any special use airspace nearby?

Example (You can no longer use Denver International Airport)



Denver International Airport

Class B Airspace, solid blue line

The second ring has a top height of 12,000 feet with a bottom of 70,000 feet

Has a control tower, indicated by blue airport symbol

There is a MOA (~ 70 miles) and several alert areas to the south

## Discussion

### What to Do

You have been hired to inspect some buildings with a height of 474 feet southeast of Disneyland in Anaheim, California. Use the [Skyvector \(Links to an external site.\)Links to an external site.](#) website to determine what type of airspace you would be operating in. To complete this job, what airports would you have to contact to gain permission? In addition, please provide any other factors that may influence the viability of this operation.

Finally, using your research, provide an opinion if this job would be worth pursuing (depending on the pay of course).

## Requirements

A minimum of one paragraph (3-4 sentences) with a maximum of three paragraphs.

## Discussion Directions

After you type your initial post by Wednesday evening at 11:59 pm Pacific Time, then read through the other entries and reply directly to at least two classmates by Friday evening at 11:59 pm Pacific Time. When you reply, ALWAYS type the name of the classmate you are responding to and your name at the bottom of the message. Make sure to use **proper grammar and punctuation** in this college-level course in all correspondence. Please avoid “text” or “twitter speak” when corresponding.

## Summary

Post by **Wednesday** evening at 11:59 pm Pacific Time

Respond to at least 2 classmates by **Saturday** evening at 11:59 pm Pacific Time

## Grading

To view the grading rubric for this discussion, click the gear icon (upper right) and then click **Show Rubric**.



Attribution-NonCommercial-ShareAlike  
CC BY-NC-SA